

**APOA2 Antibody (Center)**  
**Purified Rabbit Polyclonal Antibody (Pab)**  
**Catalog # AP7422c****Specification**

---

**APOA2 Antibody (Center) - Product Information**

Application	IHC-P, WB,E
Primary Accession	<a href="#">P02652</a>
Other Accession	<a href="#">P18656</a>
Reactivity	Human
Predicted	Monkey
Host	Rabbit
Clonality	Polyclonal
Isotype	Rabbit IgG
Calculated MW	11175
Antigen Region	28-56

**APOA2 Antibody (Center) - Additional Information****Gene ID** 336**Other Names**

Apolipoprotein A-II, Apo-AII, ApoA-II, Apolipoprotein A2, Proapolipoprotein A-II, ProapoA-II, Truncated apolipoprotein A-II, Apolipoprotein A-II(1-76), APOA2

**Target/Specificity**

This APOA2 antibody is generated from rabbits immunized with a KLH conjugated synthetic peptide between 28-56 amino acids from the Central region of human APOA2.

**Dilution**

IHC-P~~1:10~50

WB~~1:1000

E~~Use at an assay dependent concentration.

**Format**

Purified polyclonal antibody supplied in PBS with 0.09% (W/V) sodium azide. This antibody is prepared by Saturated Ammonium Sulfate (SAS) precipitation followed by dialysis against PBS.

**Storage**

Maintain refrigerated at 2-8°C for up to 2 weeks. For long term storage store at -20°C in small aliquots to prevent freeze-thaw cycles.

**Precautions**

APOA2 Antibody (Center) is for research use only and not for use in diagnostic or therapeutic procedures.

**APOA2 Antibody (Center) - Protein Information**

**Name** APOA2

**Function** May stabilize HDL (high density lipoprotein) structure by its association with lipids, and affect the HDL metabolism.

**Cellular Location**

Secreted.

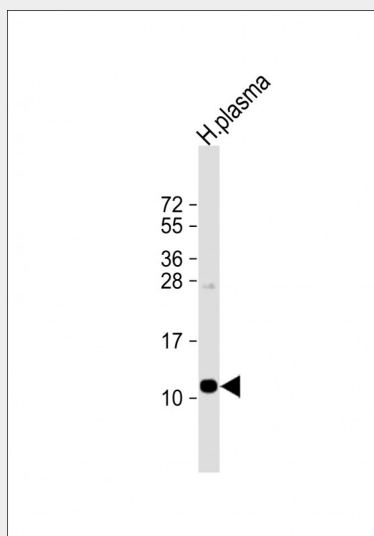
**Tissue Location**

Plasma; synthesized in the liver and intestine.

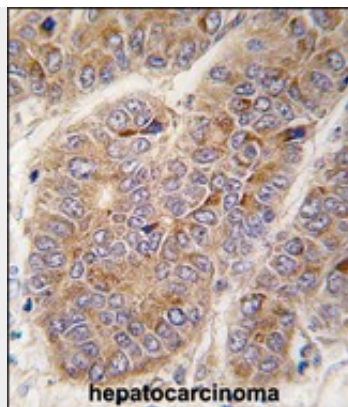
**APOA2 Antibody (Center) - Protocols**

Provided below are standard protocols that you may find useful for product applications.

- [Western Blot](#)
- [Blocking Peptides](#)
- [Dot Blot](#)
- [Immunohistochemistry](#)
- [Immunofluorescence](#)
- [Immunoprecipitation](#)
- [Flow Cytometry](#)
- [Cell Culture](#)

**APOA2 Antibody (Center) - Images**

Anti-APOA2 Antibody (Center) at 1:1000 dilution + human plasma lysate Lysates/proteins at 20 µg per lane. Secondary Goat Anti-Rabbit IgG, (H+L), Peroxidase conjugated at 1/10000 dilution. Predicted band size : 11 kDa Blocking/Dilution buffer: 5% NFDM/TBST.



Formalin-fixed and paraffin-embedded human hepatocarcinoma tissue reacted with APOA2 antibody (Center) (Cat.#AP7422c), which was peroxidase-conjugated to the secondary antibody, followed by DAB staining. This data demonstrates the use of this antibody for immunohistochemistry; clinical relevance has not been evaluated.

#### **APOA2 Antibody (Center) - Background**

APOA2, apolipoprotein (apo-) A-II, which is the second most abundant protein of the high density lipoprotein particles. The protein is found in plasma as a monomer, homodimer, or heterodimer with apolipoprotein D. Defects in this gene may result in apolipoprotein A-II deficiency or hypercholesterolemia.

#### **APOA2 Antibody (Center) - References**

Duesing,K., BMC Med. Genet. 10, 13 (2009)  
Atta,M., Thromb. Haemost. 100 (3), 391-396 (2008)  
Blanco-Vaca,F., J. Lipid Res. 42 (11), 1727-1739 (2001)